



READY

SET

LET'S GO!

GCA General Contractors
Association of New York, Inc.
We Build New York

2023 ANNUAL REPORT

General Contractors Association

Officers, 2023



Jesse Otteson
President



Leon Jacobs
1st Vice President



Roland Acosta
2nd Vice President



Ken Durkin
Treasurer

Who We Are

The General Contractors Association of New York (GCA):

Presents a strong and unified voice for the unionized heavy civil construction industry in New York. Its GCA members construct roads, bridges, rails, tunnels, transit, water and energy systems. Our member contractors build the infrastructure that makes New York, well, New York.

Table Of Contents

President & Executive Director Letter	3
Overview.....	4-7
Project Narratives.....	8-17
Labor Relations.....	18
Government Affairs.....	19
Advancing Opportunities	20
Looking Toward the Future.....	21
Safety	22
Membership List	23

Dear Colleagues and Friends,

As many of you may know, the General Contractors Association is a multifaceted organization, with a primary focus on maintaining positive labor relations on behalf of our 150 heavy civil contractor members through negotiating fair and equitable collective bargaining agreements (CBAs); helping ensure the safety of their 25,000+ represented employees; and monitoring and advocating for public funding and governmental policies that support regional infrastructure projects.

Over the last few years, we have successfully closed a half dozen mutually beneficial CBAs—an accomplishment that’s positioned our members and their represented workforce to be **Ready** to tackle the significant infrastructure opportunities that lie ahead. We’ve also engaged our members and their workforce through training and education to enhance project safety and productivity.

Separately, our advocacy has helped **Set** the stage for a robust **\$164.8 billion New York City ten-year capital program, a \$32.8 billion New York State Transportation Plan**, and the **\$1.2 trillion Federal Infrastructure Investment and Jobs Act (IIJA)** which, taken together, will keep our members busy for years to come.

Second Avenue Subway Phase II, the Gateway Hudson River Tunnels, Penn Station expansion, the BQE Cantilever, and the Interboro Express

(IBX), are just a few of the larger projects made possible by those funding plans. But just as important to the industry are the many dozens of other less visible, but no less essential roadway, water and sewer, and parks projects these funding plans have enabled.

And so, with all the pieces in place, we are ready to **GO...**

Appropriately, that is the focus of this year’s Annual Report: **Ready, Set, (Let’s) Go!** which should give you a bird’s eye look at the work our members are doing as a result of our collective efforts over the last two years.

As we approach 2024, we look forward to our continued collaboration with all of you—our members, our friends in labor, our clients, our elected officials, and even the general public—to do what we do better, smarter, and safer, so we can continue to proudly live up to the century old claim that **“We Build New York.”** We’re Ready, We’re Set, So Let’s Go!



Sincerely,

Jesse Otteson
President

Robert Wessels
Executive Director &
Secretary

GCA CONTRACTORS: WE BUILD NEW YORK

Since 1909, the member contractors of the General Contractors Association of New York have built the most critical parts of this amazing city, state and region.



At the very center of the GCA's mission is the expertise, guidance and, most of all, the participation of our contractors. We remain the leading advocate for the heavy civil industry in New York because our members donate their time to become our Officers, Executive Committee, and volunteer for our Policy and Safety Committees.

Our members are proud unionized companies who make the impossible...possible.

As we look toward the future, we are:

A large-scale construction project at night. A massive, light-colored pipe is being positioned on a concrete structure. Several workers in high-visibility vests and hard hats are visible, some standing near the pipe and others further back. Bright work lights illuminate the scene, creating a stark contrast with the dark night. Yellow safety railings are in the foreground, and a wooden structure is visible on the left. The overall atmosphere is one of intense industrial activity.

GETTING READY

New York City's water, sewer, parks, and transportation infrastructure—built almost entirely by GCA members over the last 114 years—has arguably made the greatest economic engine in the world possible.

In order to protect and enhance this enviable position, the GCA has invested significant time and energy over the last several years to aggressively advocate for increased, predictable, and sustainable federal, state, and local capital investment to expand and rebuild the City's and State's aging and deteriorating infrastructure.

Those efforts have paid off in terms of helping secure record MTA and Port Authority Capital Plans, New York State DOT and New York City Capital Programs, and historic increases in federal support.

GETTING SET

With the approval of the following capital plans, and with promised funding from the City, State and Federal governments starting to flow, many projects that have been in the pipeline are finally set to advance to actual construction. Those plans include:



- **The MTA's \$54.8 billion "2020-24 Capital Program"** ...40 percent higher than its previous \$33.3 billion 2015-2019 program.



- **The Port Authority's 2017-2026 Ten-Year Capital Plan totaled \$32.2 billion and included a \$2.7 billion commitment to the Gateway Program Development Corporation** for Phase 1 of the Gateway Program.



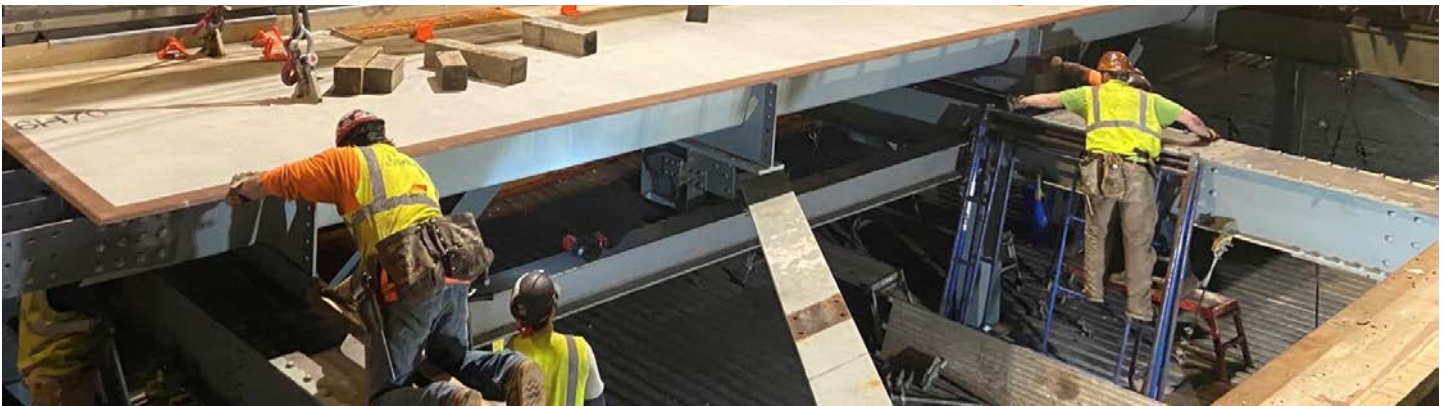
- **New York State DOT's \$32.8 billion 2022-23 through 2026-27 Capital Program** continues to provide stable and predictable multi-year funding for the region's roads, bridges, and non-MTA transit systems.



- **New York City's FY 2024 Ten-Year Capital Strategy anticipates investing \$164.8 billion including \$29 billion for DEP, \$31 billion for DOT and \$23 billion for DDC**, to improve its roads, schools, bridges, water and sewer facilities, parks, cultural centers, and transportation systems all across five boroughs.



- **The \$1.2 trillion Federal "Infrastructure Investment and Jobs Act,"** (a.k.a. the Bipartisan Infrastructure Bill) is poised to provide historic levels of transportation funding for roads, bridges, transit, and intercity rail systems, increasing them over previous levels by more than 50 percent, while targeting a significant portion of that funding to projects of critical importance to New York and GCA members.



LET'S GO!

With those funding commitments now in place from the City, State, the MTA, the Port Authority, and other public and private entities such as Amtrak, NJ Transit, Delta Airlines, and JFK Millenium Partners, a host of projects have either already begun to advance or are poised to move to actual construction. Here are just some of the largest ones:



- With NY, NJ and IJJA funding commitments, the Gateway Development Commisission (GDC) recently released an **RFP for Hudson River ground stabilization** for the future construction of the two planned **\$16 billion Amtrak tunnels**.

- **Property acquisition for Phase II of the \$6.4 billion Second Avenue Subway (SAS)** got underway this spring, which will bring SAS to 125th Street, creating a link to other NYCT subways and buses as well as to MTA Metro North rail service.



- The **MTA's proposed \$5.5 billion 14-mile Interboro Express (IBX) light rail system** advanced to the formal environmental review stage early in 2023, and is expected to conclude in 2025, with design and construction following shortly thereafter.

- While the MTA has completed initial elements of its **Penn Station Renovation project**, the recent uncoupling of the State's General Project Plan (GPP) made an additional **\$7 billion in improvements** no longer contingent on tax revenues from above ground private office construction, and ready to advance using public funding sources.



- **MTA Penn Access, a \$1.7 billion project** to bring MTA Metro North into Penn Station is well underway, creating four new stations in underserved portions of the Bronx.

- **New York State's Van Wyck Expressway Capacity and Access Improvements to JFK, an \$800 million project** will complement the \$1.2 billion design-build project to streamline JFK's roadways and create a Ground Transportation Center.



- After the completion of the \$8 billion LaGuardia Transformation Project, the construction phase of the **\$19 billion JFK Redevelopment Program**, a public-private partnership between the Port Authority and JFK Millenium Partners, is underway. The program will build two new giant terminals (1 and 6), and expand and modernize existing terminals.

MAKING NEW YORK BETTER: ONE PROJECT AT A TIME



NYCDDC BROOKLYN BRIDGE – MONTGOMERY COASTAL RESILIENCE PROJECT

The Brooklyn Bridge-Montgomery Coastal Resilience (BMCR) project, which began in early 2023, is a coastal protection initiative, jointly funded by the City of New York and the federal government, aimed at reducing flood risk due to coastal storms and sea level rise in the Two-Bridges Neighborhood in Lower Manhattan. The BMCR project reconstructs a portion of the East River Esplanade to reduce risk from flooding while bringing community enhancements, park upgrades, and better access to the East River Waterfront.

Flood protection for the project is being achieved by installation of both deployable and permanent barriers along the neighborhood edge of the esplanade under the elevated FDR Drive. Construction calls for extensive SOE, excavation, pile driving and micropiling. The deployable barriers include flip-up gates, roller gates, and swing gates, all of which will swiftly activate when required. In addition, permanent barriers will be installed including in the form of flood walls and elevated surfaces. Sewer capacity improvements will provide additional flood protection during heavy rainfall events as well as the interceptor Gate Building.

Significant progress has been made. The first phase of the project is well underway with the excavation of the floodgate foundation. The team is wrapping up the remaining test pits along the project corridor and has initiated jet grout and pile operations that are integral to the flip-up gate system.

EAST SIDE COASTAL RESILIENCY

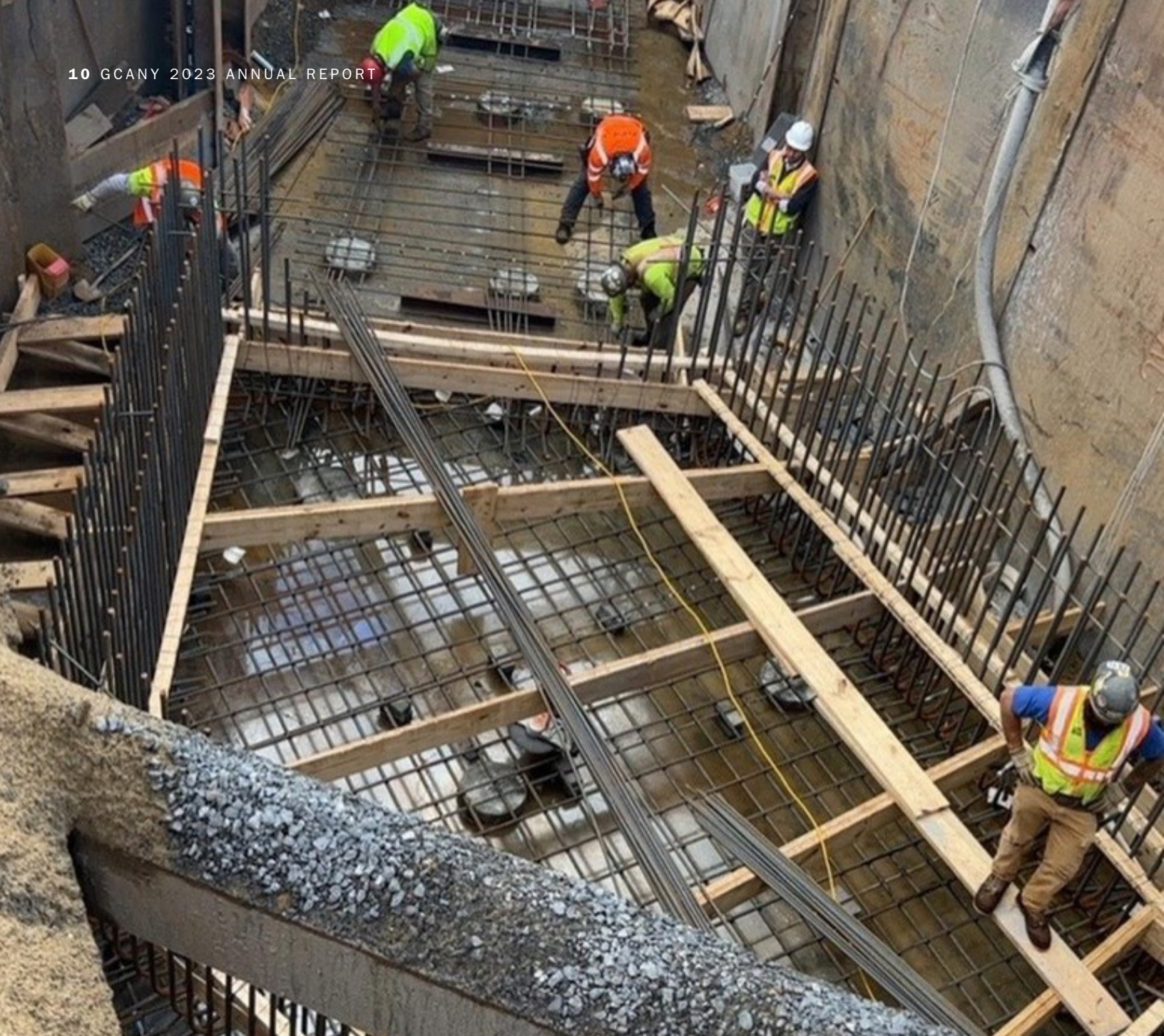
C.A.C. Industries is a member of the tri-venture IPC Resiliency Partners on this project to install flood protection comprised of floodwalls and closure structures within 61 acres on Manhattan's Lower East Side. The project's centerpiece is elevating and reconstructing the East River Park to make it more resilient to coastal storms. Addressing the enormous amount of community feedback is an ongoing process, and the team continues to update stakeholders about closures, tentative schedules, and anticipated access dates to the new park, and resolve potential conflicts. As a result, the project is now divided into three working sections so that only one third of the park is closed at a time, allowing the community to use some park facilities during construction.



THREE CORNERS!

Citnalta Construction Corp. is constructing MTA C&D's \$192 million ADA upgrades at the 14th Street Station Project, in a joint venture. The project requires the construction of nine passenger elevators which involves the construction of deep shafts from street level to both mezzanine and platform levels, and the addition and/or modification of 64 stairways, among numerous other upgrades.

When the entire project is complete the 14 Street Station will be fully accessible with newly installed elevators, refurbished staircases, mezzanines and platforms. The project is currently on time and on budget.



JFK 90-INCH INTERCEPTOR SEWER

C.A.C. Industries installed 500 feet of 90-inch RCP combined sewer pipe and constructed four poured-in-place chambers on this interceptor sewer project at JFK International Airport. Challenges abounded. The invert of the existing sewer at more than 30 feet deep and a high-water table made excavation and SOE installation a special situation. To construct chambers One and Four, C.A.C. was required to set up one of the largest bypass pump systems in New York City's history. The ground's high iron content necessitated a sophisticated on-site plant to filter the water before it entered the storm sewer.

NEW NYPD PRECINCT

Citnalta is making steady progress on the new 116th Precinct Station House in Rosedale, Queens, for the NYC Department of Design and Construction. The new 48,410-square-foot precinct has been designed with a Community Meeting Room on the first floor, with a dedicated entrance from the front of the building to allow members of the neighborhood to engage with the precinct. In addition, the precinct will also accommodate administrative offices, staff common areas, a stress reduction room, locker rooms, charging stations for electric vehicles, client booking and processing areas, a detention area with secure cells, an evidence room and vehicle storage.

The team has maintained an excellent safety record throughout construction, and the new building is being designed to be certified LEED Silver.



SUNSET COVE BOARDWALK AND OUTDOOR CLASSROOM CONSTRUCTION

Completed in August 2023, this project was the second of two phases of reconstruction work undertaken by Grace Industries LLC. The recently completed project involves an 8-foot-wide boardwalk adjacent to the newly restored wetlands at Sunset Cove Park. The boardwalk was partially constructed using reclaimed wood from the Rockaway Boardwalk destroyed by Hurricane Sandy in 2012 and leads to a covered outdoor classroom that has interpretive elements, including inset seasonal sun position information and binoculars. A new bioswale has also been built at the park entrance to collect stormwater.



NEW DORP STATION

OHLA USA's Judlau Contracting division, joined together with its client NY MTA C&D, as they announced full vertical accessibility with the installation of two elevators at New Dorp Station. New Dorp is one of eight stations that Judlau is upgrading in a design-build contract for the MTA throughout New York City's five boroughs.

To complete the project, Judlau performed structural and excavation work to accommodate the new elevator installations, reconstructed platform edges, station structural repairs, upgraded electrical services, and various enhancements to architectural features and communications systems.

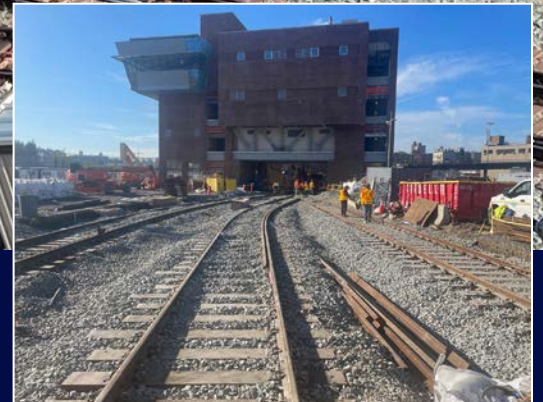
"It's so satisfying to know that all New Yorkers can access the New Dorp Station now!"

69TH STREET TRANSFER BRIDGE

A historic landmark of NYC, the 69th Street Transfer Bridge served as a critical connection in the extensive marine operations of the New York Central Railroad (NYCRR) between 1911 and 1968. This structure was used to transfer railcars off and onto barges for transport between waterfront rail terminals in New York and New Jersey.

This Walsh reconstruction project will stabilize and restore the existing structure and will allow members of the public access for recreational and educational uses. It is currently listed on the National Register of Historical Places, and the rehabilitation is being performed for the NYC Parks.





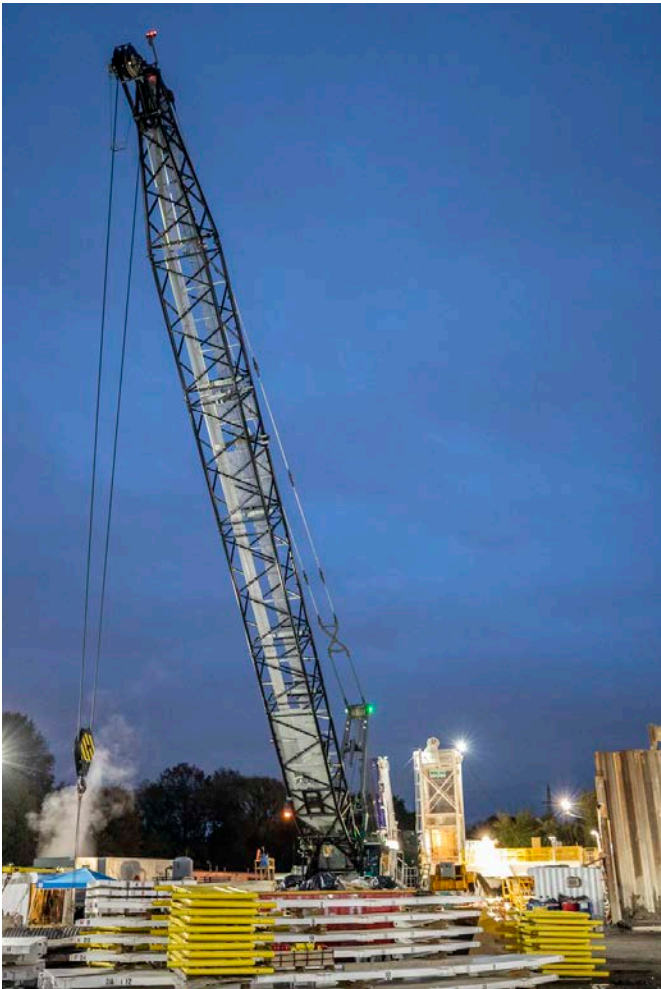
207TH STREET YARD

The 207th Street Yard is one of two heavy overhaul shops in the New York City Subway system providing overhaul and rebuilding services for both A and B Division Trains. Due to the low elevations of the yard located adjacent to the Harlem River, the yard was severely damaged during Superstorm Sandy, and significant reconstruction efforts were needed to restore it to its full function as one of the main yards in the MTA New York City Transit system. This Walsh project rehabilitated and upgraded the damaged signal, communication, and fiber equipment throughout the yard as a part of NYCT's signal modernization plan, as well as provided flood wall protection to provide resiliency against future storm events.



THROGS NECK BRIDGE

OHLA USA's Judlau Contracting, Inc. division replaced the Throgs Neck Bridge's original concrete roadway, which dates back to the bridge's construction in the late 1950s, with a new, lighter-weight, more substantial steel deck. The scope of work for this critical project includes installing 240,000 square feet of concrete-filled steel grid deck for the orthotropic deck replacement, which is designed for a 100-year fatigue life. The Judlau project team is also responsible for building a new drainage system, installing roadway lighting on suspended spans, and placing new overhead signs, sign structures, a concrete median, and new concrete decks at the towers and anchorages.



DRINKING WATER SHAFTS

This project will finally complete an effort begun in the 1970s to bring City Tunnel #3 drinking water from the Catskills to Queens and Brooklyn. Specifically, the project includes the sinking of 2,750-foot-deep shafts varying in diameter from 25 to 60 feet.

There were many challenges, notably geologic challenges common in Queens, specific to the project’s location. Ground freezing was used to support excavation of some 200 feet of overburden. Ground freeze operations have been completed at the main site and are in progress at the sister site, for completion in early 2024. The team is successfully meeting other challenges such as drilling and blasting in multiple diameters in an urban environment. Once excavation and shaft wall lining are completed to the tunnel connections, the team will install four 60-inch-diameter stainless steel pipes 2 inches thick to be bolted and flanged up to the surface of the shaft.

PELHAM PARKWAY PHASE II

For this project, C.A.C. Industries served as general contractor completing trunk water main work in sizes ranging from 36” to 96”, roadway reconstruction and restoration, and environmental restoration in the Pelham Parkway area of the Bronx.

This work encompassed replacement of subsurface utilities, upgrading of drainage structures, installation of new sewer, trunk and distribution water mains, streetlights, traffic signals, and guard rail.

The team modified the design and construction methods to save a significant number of trees—a strong desire of the community board.





CHAMPLAIN HUDSON CABLE

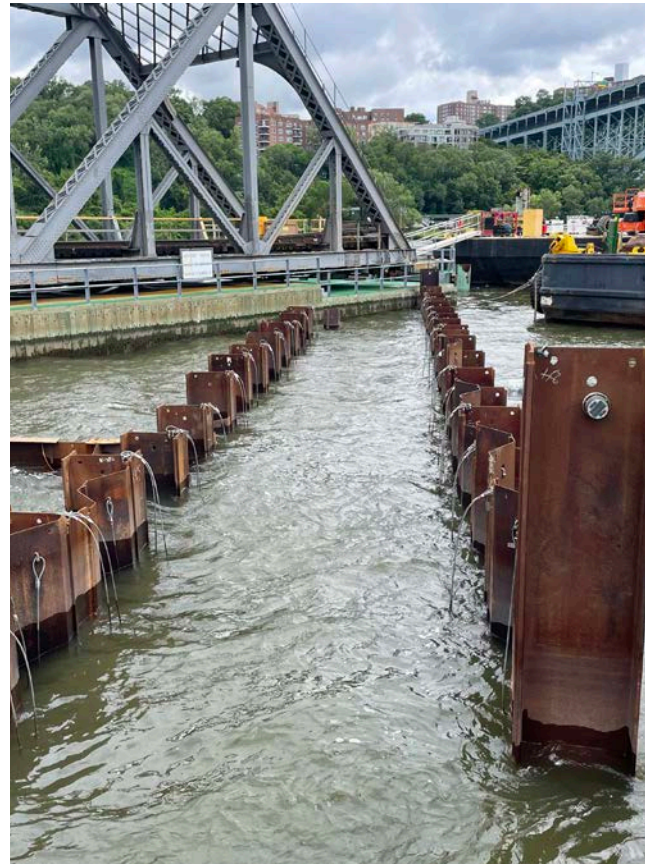
The Caldwell Team has made steady progress on the Champlain Hudson Power Express project, which involves multiple marine phases of one of the largest infrastructure investments in New York State history. Capitalizing on the team's expertise in cable laying and shore end drills, the project will transport hydroelectricity to New York City from Quebec and will help power more than one million homes.

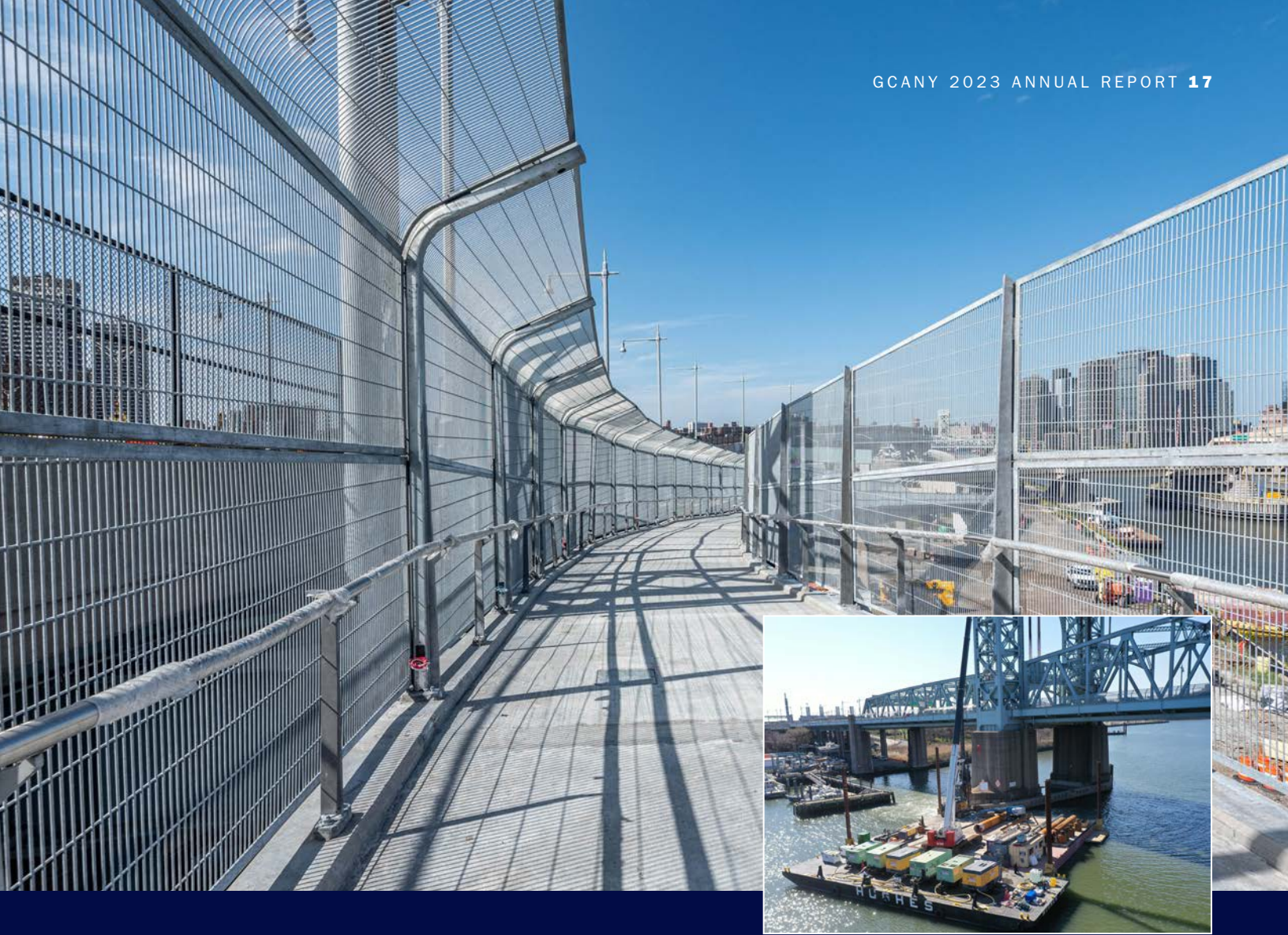
"We're powering our local neighborhoods."

SPUYTEN DUYVIL BRIDGE EAST FENDER AND SUBMARINE CABLE REPLACEMENT

Weeks Marine skillfully worked along the Hudson River to replace the east fender, along with the existing timber fender system and remnants of even older systems of the bridge. Those older systems were replaced with a new concrete-filled steel pile and bracing fender system, complete with treated timber walers and sheathing. New navigation lighting and a navigation clearance gauge were installed.

In addition, the existing submarine cable was protected, maintained and renewed while adding new line and electrical and signal feeds to the bridge.





RFK PEDESTRIAN BRIDGE AND HARLEM RIVER LIFT SPAN FENDERING

This Walsh project is an integral part of the overall Greenway Beautification Program by New York City Parks Department together with upgraded access to Randall's Island. Upon completion, the shared use path will be the first ADA-compliant access from Manhattan to Randall's Island.

The project faced significant challenges. With only one season to build the shared use path structure, construction began in late 2022, forcing substructure work to be performed during the winter months so that superstructure work could begin in spring 2023. In addition, the architectural demands on the final fence design necessitated curved fence panels in both horizontal and vertical directions that had to be fabricated and installed on a superelevated curved bridge.

Crews faced a tremendous challenge in drilling a 54-inch-diameter 14-foot-6-inch rock socket into Manhattan quartz for the fender rehabilitation and in the fiber reinforced polymer piles in the Harlem River. The geometry configuration of the piles, rock condition and barge size demanded a specific sequencing of drilling and multiple barge moves within a cluster of piles. Fifteen percent of the piles were installed under the Harlem River Lift Span with only a 55-foot vertical clearance at mean high water, requiring the use of a low headroom drill rig.

LABOR RELATIONS



GCA CONTRACTORS HAVE HAD A **9.4% INCREASE** IN HOURS.



(CYTD '23 over CYTD '22)

Our heavy civil contractors are proud of their highly skilled, highly trained union workforce, which they deploy on every job. On behalf of its members, the GCA negotiates more than 14 collective bargaining agreements and addendums. We work extensively with our labor unions on issues that affect our member companies, keeping communication lines open, and collaborating with our partners to maintain a stable and mutually beneficial work environment. With millions of hours worked on thousands of projects, we serve as trustees on multiple funds, to

ensure the best interests of the fund participants and their beneficiaries. The GCA works with our individual members on all issues arising from jurisdictional disputes, personnel requirements and mediation.



We work collaboratively with our partners to the benefit of all New Yorkers. For example, labor and management raised over \$100,000 for a local charity.



GOVERNMENT AFFAIRS



In a highly regulated industry, the GCA is

consistently advocating on behalf of its member contractors. Whether it's in Washington, Albany or City Hall, we are working with elected officials, regulators and agencies to create an environment that allows contractors to do what they do best: build.

The GCA organizes lobbying events and trips to meet with Congress, the State Legislature and City Council. We are consistently speaking with commissioners and agency heads.

The staff writes and delivers formal testimony, legislative memos and commentary on significant issues that affect contractors. In addition, the GCA works to focus budget priorities in order to help ensure that infrastructure projects are fully funded.



It is our priority to engage decision makers at all levels of government to make sure that they have all necessary information to introduce new policies, amend existing regulations and address critical issues affecting the heavy civil industry.

ADVANCING OPPORTUNITIES



The GCA and its member contractors share a deep commitment to ensuring that everyone has the opportunity to succeed in the industry. We are using networking events, outreach and pre-apprenticeship programs to find professionals and the labor to build a diverse workforce. We are committed to pre-apprenticeship programs by serving as a board member for Helmets to Hardhats and supporting Non-Traditional Employment for Women and other groups that promote inclusion like Women’s Builders Council. Each year the GCA holds its “Opportunity Expo” program which connects certified MWBEs and SDVOBs

with our contractors’ procurement and estimating teams. The 2023 event was our best attended to date. All the MWBE firms that visited had the time to meet with contractors; many went on to be prequalified and are now regularly contacted for business opportunities.

In addition, each attendee received the “Opportunity Outlook” handbook. This manual is an invaluable resource which includes information on bidding and provides insight into navigating the heavy civil industry, subcontracting and honing the skill set of emerging companies.



LOOKING TOWARD THE FUTURE



Since 2010, summer interns who work with our contractor members are eligible to be nominated for a scholarship award through the **John Donohoe Scholarship Award** program. The college students must have completed their junior year and be recommended by their employer.

- **This year the GCA awarded the John Donohoe Scholarship to 28 winners.**



- **Since the inception of the Scholarship in 2009, there have been 254 scholarships awarded.**
- **All disbursed awards total \$889,000.**

Across the region, heavy civil contractors are taking great strides forward, and GCA members are leading the charge.

We are using new technologies, innovative techniques, and a wider range of project delivery methods. Just as important, we are mentoring, fostering and helping to professionalize a new generation of young talent. Whether it is through our scholarship awards or support for college-based outreach programs, the changes are evident, and the results... incredible!



SAFETY



There is no higher priority for the contractors of the GCA than the safety of their staff and their workers. Safety can never be taken for granted, nor can we let our guard down.

Each year the GCA actively engages our members with a set of activities that promote safety. There are training courses offering certifications, topics for toolbox safety meetings, subject specific webinars (like the NYPD's Active Shooter training) and sharing of best practices at our monthly Safety Committee meetings.



Safety Week

Each year Safety Week allows the industry to reinforce safe work practices. The GCA partners with OSHA's Fall Protection Stand-Down, an issue that

plagues sites nationally. Fall protection is always available, mandatory on most sites and totally necessary. We also distribute shirts as a reminder that "Safety Starts With Me".

Suicide Prevention Week

Construction has the second highest suicide rate of any profession. Suicide Prevention Week is dedicated to raising awareness of suicides in the construction industry, and to providing resources to help prevent those deaths. Every year, during September — National Suicide Prevention Month — the GCA, along with the entire construction industry, will dedicate a week to raising awareness about the unique challenges in construction that lead to suicide and how we can prevent it.



CONSTRUCTION SUICIDE PREVENTION WEEK

General Contractors Association

Membership List

The GCA is:

Contractor Members

Akela Contracting LLC
 All Boro Staffing Services Inc.
 American Pile and Foundation LLC
 Anchormen Construction LLC
 Atlantic Reinforcing Concrete Co.
 Bancker Construction Corp.
 Beaver Concrete Construction Co., Inc.
 Becho Inc.
 BOND Civil & Utility Construction, Inc.
 Bove Industries, Inc.
 C.A.C. Industries Inc.*
 CCA Civil, Inc.
 Citnalta Construction Corp.*
 Citywide Paving Inc.
 Civetta/Cousins JV, LLC
 Coastal Environmental Group, Inc.
 Coppola Paving & Landscaping Corp.
 CRS Contractors Inc.
 Danella Construction of NY, Inc.
 DeBoe Construction Corp.
 DeFoe Corp.*
 Delaney Associates, LP
 Delta Railroad Construction, Inc. (DBA
 Delta Railroad Services)
 DGI – Menard, Inc.
 DiFazio Industries LLC
 Dragados USA, Inc.
 Dryden Diving Co. Inc.
 D-Star Waterproofers, Inc.
 E.E. Cruz & Co., Inc.*
 Eastern Excavation
 Eberhart Construction Co., Inc.
 Ecco III Enterprises, Inc.
 El Sol Contracting and Constr. Corp.*
 Falco Construction Corp.
 Ferreira Construction Co. Inc.*
 Fratco Construction Corp.
 Frontier Kemper Constructors Inc.,
 New York Region*
 Gateway Demo/Civil Corp.
 Gateway Industries, Inc.
 Gianfia Corp.
 Grace Industries LLC
 Gramercy Group, Inc./GGI Inc.
 H&L Contracting LLC
 Halmar International LLC.*
 HHJR Construction LTD.
 d/b/a Accurate Enterprises
 HUICATAO Corp.
 Integrated Structures Corp.
 Island Foundations Corp.
 J. D'Annunzio & Sons Inc.*
 J. F. Shea Construction, Inc.*
 J.T. Cleary Inc.
 Jett Industries, Inc.
 JLJ IV Enterprises Inc.
 John Civetta & Sons, Inc.*
 John P Picone Inc.*
 JR CRUZ Corp.*
 J-Track, LLC
 Judlau Contracting, Inc.*
 Kelco Construction Inc.
 Keller Industrial, Inc.*
 Keller North America, Inc.
 Kiewit Foundations Co.

Kiewit Infrastructure Co.*
 KiSKA Construction Inc.
 KNR Management Inc.
 LAWS Construction Corp.
 Linde-Griffith Construction
 Macro Enterprises Ltd.
 Maspeth Supply Co., LLC
 Matt-Con Services Corp.
 Mayrich Construction
 Michels Construction, Inc.
 MVN Associates Inc.
 NAC Industries Inc.
 New York Geomatics Inc.
 Nicholson Construction Co.
 Northeast Remesco Construction, Inc.*
 Oliviero Construction Corp.
 Paul J. Scariano, Inc.*
 Perfetto Contracting Co. Inc.
 Perfetto Enterprises Company, Inc.
 Petracca & Sons, Inc.
 Posillico Civil, Inc.
 Prestige Stone & Pavers Corp.
 Prima Paving Corp.
 Primer Construction Corp.
 Railroad Construction Company, Inc.*
 RailWorks Transit LLC
 Rebar Steel Corp.
 Reicon Group, LLC
 Restani Construction Corp.
 RMSK Contracting Corp.
 Ruttura & Sons Construction Co., Inc.
 Schiavone Construction Co. LLC*
 Silverite Construction Co., Inc.*
 Skanska Koch, Inc.*
 Skanska Mechanical and Structural Inc.
 Skanska USA Civil Northeast Inc.*
 T. Moriarty & Son, Inc.*
 The Lane Construction Corporation
 The Laquila Group Inc.
 The Urban Group, Ltd.
 Transit Construction Corp.
 Trevcon Construction Co., Inc.*
 Tri-State Civil Construction, LLC
 Tully Construction Co. Inc.*
 Tutor Perini Corporation*
 Underpinning & Foundation Skanska, Inc.
 Unicom Construction Enterprises, Inc.*
 Union Paving & Construction Co., Inc.
 Urban Foundation/Engineering, LLC*
 VMR Civil LLC
 Walker Diving Underwater Construction LLC
 Walsh Construction Company II, LLC*
 WDF, Inc.
 Weeks Marine Inc.*
 Welkin Mechanical LLC
 William A. Gross Construction
 Associates, Inc.*
 Yonkers Contracting Co., Inc.*

Associate Members

ADP
 Advance Testing Company, Inc.
 AI Engineers, Inc., PC.
 Airweld Inc.
 Alliant Insurance Services, Inc.
 Aluma Systems

Amaracon Testing & Inspections, LLC
 American Global LLC
 Amoroso Equipment Rental Co.
 Anchin, Block & Anchin
 Anderson Kill PC.
 Armstrong Teasdale
 Associated Construction Contractors of NJ
 Awisco New York Corp.
 Bank of America
 Bay Crane Service, Inc.
 Brooklyn Rebar, LLC
 Brown & Perkins, Inc.
 C & H Agency, Inc.
 Call-A-Head Corp.
 Campbell Foundry Company
 Cap Equipment Leasing Corp.
 Capital Project Management, Inc.
 CFS Steel Company
 CHA Tech Services, LLC
 Chubb Group of Insurance Companies
 City Underwriting Agency, Inc.
 CityMD
 Clarity Testing Services, Inc.
 Clean Earth, Inc.
 Cohen Seglias Pallas Greenhall &
 Furman PC
 CohnReznick LLP
 Construction Information Systems
 Construction Realty Safety Group
 (CR Safety)
 Construction Risk Partners LLC
 Cranes, Inc.
 Cullen and Dykman LLP
 Dewberry Engineers Inc
 Doka USA, Ltd.
 Duane Morris LLP
 Durante Rentals
 E-J Electric Installation Co.
 Enterprise Fleet Management
 Fabiani Cohen & Hall, LLP
 Feldman Lumber – US LBM, LLC
 Forchelli, Curto, Deegan, Schwartz,
 Mineo & Terrana LLP
 GEI Consultants, Inc., PC.
 Goetz Fitzpatrick, LLP
 Grae & Grae, LLC
 Grassi & Co., CPAs P.C.
 GZA GeoEnvironmental of New York
 H.O. Penn Machinery Company, Inc.
 Hays Construction – Civil
 Hellman Electric LLC
 Herc Rentals Inc.
 Hinckley Allen
 Hirani Engineering and Land Surveying, P.C.
 HNTB Corporation
 Hoffman International, Inc.
 Hughes Bros., Inc.
 Icon Equipment Distributors Inc.
 Independent Equipment Corp.
 Infinite Consulting Corp.
 Jesco, Inc.
 Kaufman Dolowich & Voluck, LLP
 KND Licensed Electrical Contracting &
 Services, Corp.
 Komatsu America Corp.
 LDA Compliance Consulting, Inc.
 Liberty Mutual Surety

Lockton Companies, LLC
 Marcum LLP
 Marsh USA, Inc.
 McElroy, Deutsch, Mulvaney &
 Carpenter, LLP
 Milwaukee Power Tool
 Moritt Hock & Hamroff LLP
 MSPC Certified Public Accountants
 and Advisors, PC.
 Mueller Company
 Mueser Rutledge Consulting Engineers
 National Insurance Brokerage of NY, Inc.
 Nautilus Consulting, LLC
 New York Crane & Equipment Corp.
 New York Truck Escorts & Permits Inc.
 NFP Property & Casualty Services, Inc.
 Northwest Pipe Company
 Our Rental Pumps LLC
 Parsons
 Partners In Safety, Inc.
 Patrick DiCerbo / Northwestern Mutual
 Peckar & Abramson
 Powerpak Civil & Safety, LLC
 Pro Safety Services, LLC
 Raw Equipment Corp.
 RCA Asphalt, LLC
 Robert C. Bill Associates, Inc.
 Rose & Kiernan, Inc.
 Safety Dynamics, LLC
 Safety Environmental Co. of NY, Inc.
 Sax LLP
 Schnabel Engineering of New York
 SGS Galson
 Sheppard, Mullin, Richter & Hampton
 Siefert Associates LLC
 Sims Metal
 Site Safety, LLC
 Smyrna Ready Mix Concrete, LLC.
 Soil Connect Services, Inc.
 Sound Environmental Associates, LLC
 Spectrum Personal Communications Corp.
 Sterling Risk
 STV Inc.
 Sunbelt Rentals
 T&H Brokers Inc
 Taylor Oil Co. Inc.
 Thalle Industries, Inc.
 The Fort Miller Co., Inc.
 The Graham Company
 Those Amazing Professions Inc.
 Ticon New York, Inc.
 Travelers
 Troutman Pepper Hamilton Sanders LLP
 United Rentals North America, Inc.
 United Site Services, Inc.
 Urban Engineers of New York, D.P.C.
 UrbanTech Consulting Engineering, PC
 USI Insurance Services LLC
 VHB Engineering
 W&W AFCO
 Warsaw Burstein LLP
 Welby, Brady & Greenblatt, LLP
 Welsbach Electric Corporation
 Wiss & Co. LLP
 WithumSmith + Brown, PC
 Zurich Insurance

* denotes Executive Committee

LET'S GO!

GCA

General Contractors Association of New York, Inc.
We Build New York

60 East 42nd Street, Suite 3510
New York, NY 10165-3598
gcanyc.com