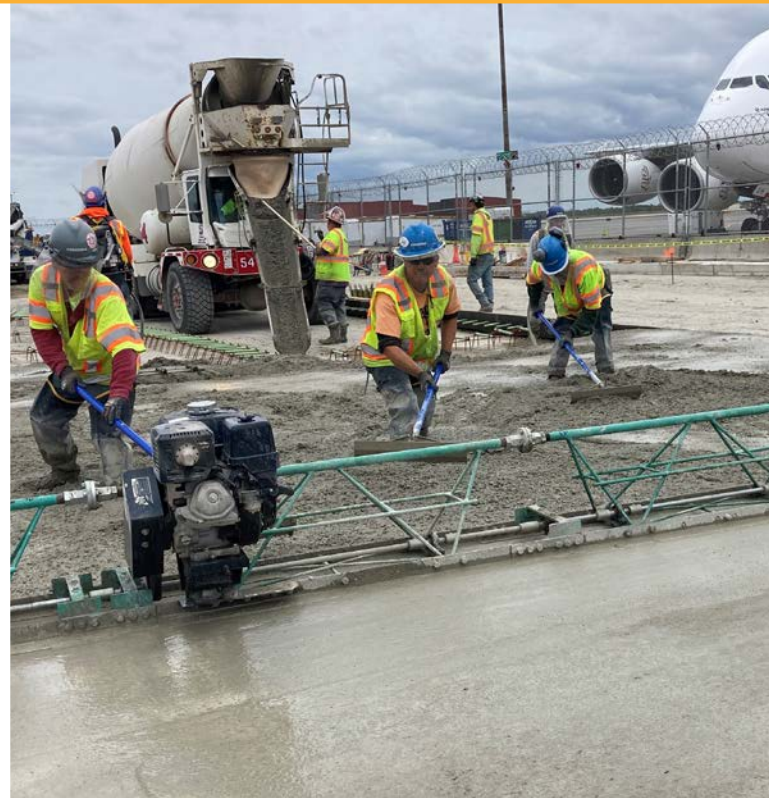
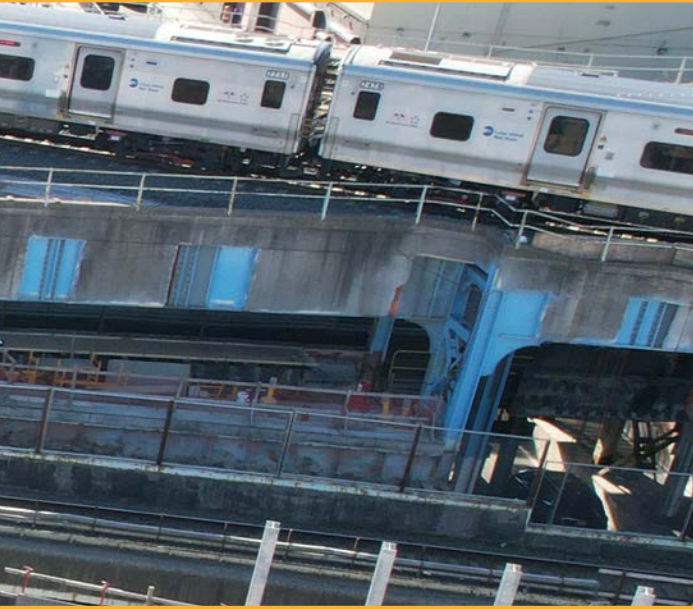




MOVING NEW YORK FORWARD!



GENERAL CONTRACTORS ASSOCIATION

Officers, 2024



Jesse Ottesen
President



Leon Jacobs
1st Vice President



Roland Acosta
2nd Vice President



Ken Durkin
Treasurer



WHO WE ARE

The General Contractors Association of New York (GCA): Presents a strong and unified voice for the unionized heavy civil construction industry in New York. Its GCA members construct roads, bridges, rails, tunnels, transit, water and energy systems. Our member contractors build the infrastructure that makes New York, well, New York.

TABLE OF CONTENTS

President & Executive Director Letter	3
Overview	4-5
Project Narratives	6-13
Member Events	14-15
Labor Relations	16
Government Affairs	17
Safety	18-19
MWBE Participation	20
History of the GCA	21
The Next Generation	22
Membership List	23

Dear Colleagues and Friends,

Last year's Annual Report focused on the fact that the GCA's 150 heavy civil construction member firms and the 25,000 members of their represented workforce were **ready** to tackle the significant infrastructure opportunities that lay ahead—based not only on robust State, City, MTA and Port Authority Capital Programs and substantial new funding from the federal Bipartisan Infrastructure Law (BIL), but also on significant private capital investment.

Our advocacy over the past few years helped **set** that stage. In no small part, it produced more than a quarter of a *Trillion* dollars (yes, Trillion with a “T”) worth of public works investments going forward, including New York City's \$164.8 billion 10 Year New York City Capital Program; New York State's \$32.8 billion Transportation Plan; the Port Authority's \$32 billion Capital Plan (plus the transformative \$19 billion public/private JFK Redevelopment Program); and the MTA's \$54 billion 2020-25 Capital Plan.

Add to all this the Gateway Development Commission moving ahead with construction on the \$16 billion Hudson River Tunnel project and the recently proposed but yet to be approved \$68.4 billion MTA 2025-29 Capital Plan. You can see going forward our members can expect to be busy modernizing and improving New York's infrastructure for years to come.

Appropriately, that is the focus of this year's Annual Report: ***Moving New York Forward!***

The report recounts the work GCA members have been doing this past year and provides an optimistic look at the opportunities taking shape.

As we approach 2025, rest assured that we will continue to make our industry's presence and needs known with decision makers in Washington, Albany, City Hall, and even the private sector, to ensure that the funding for all those needs continues to flow as planned.

We also look forward to continuing to work collaboratively and in partnership with our colleagues and friends in labor to do what we've done best together since 1909, and that is, to ***“Build New York.”***

Sincerely,

Robert G. Wessels
Executive Director

Jesse Ottesen
President

GCA CONTRACTORS: WE BUILD NEW YORK

For more than a century, GCA contractors have been building New York. The proud union companies that comprise our membership keep the city moving forward, and at high speed. Whether the project is big or small, our contractors stand at the ready to get the job done.

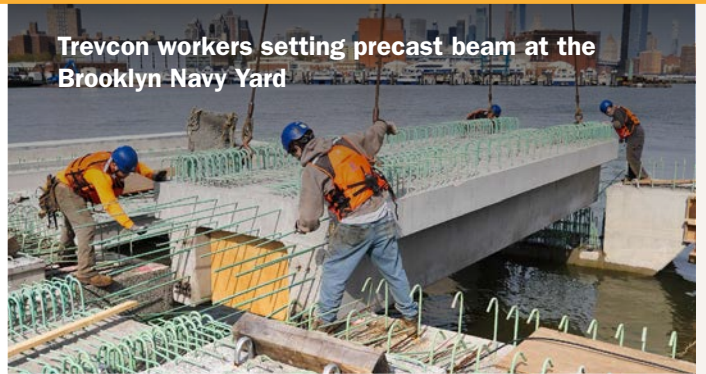
And it's not just about the infrastructure jobs we do. The GCA Officers, Executive Committee and contrac-

tor members are dedicated to making sure that the whole city moves forward, that the heavy civil industry continues to make its mark, and that the workforce we employ can live and thrive in New York.

Our neighbors may never give it a second thought, but whether it's roads, rails, airports, bridges, tunnels, water and sewer, foundations or public buildings, we are MOVING NEW YORK FORWARD.



Defoe opens new Randall's Island to Manhattan Ramp



Trevcon workers setting precast beam at the Brooklyn Navy Yard



Citnalta completes a new four-story addition to an existing school building



Picone finishes new building at the Bay Park Conveyance Project


OUR PUBLIC WORKS


The rubber is meeting the road, and the dollars are finally coming to New York from the federal Bipartisan Infrastructure Law (BIL), the landmark \$1.2 trillion infrastructure program. The BIL provides funding for critical transportation infrastructure, clean energy development, clean drinking water access, and more.


In New York, the State and City public owners are leveraging BIL funding to advance critical infrastructure projects like the Gateway Hudson Tunnel Project, the JFK Airport Redevelopment Program, and many others. Here's a snapshot of GCA members' projects and the contracts they were low bidder on **this year**:



GCA Members were awarded:
100 JOBS / \$5.86 BILLION
63.2% OF PUBLIC DOLLARS ALLOCATED

- 

\$20 Billion
Transportation
- 

\$1.7 Billion
Water
- 

\$681 Million
Clean Energy & Power



NYC DDC — 15 PROJECTS / \$310.4 MILLION
NYC DEP — 15 PROJECTS / \$1.7 BILLION
NYC DOT — 3 PROJECTS / \$46 MILLION
NYC PARKS — 16 PROJECTS / \$97 MILLION
MTA C&D — 13 PROJECTS / \$2.08 BILLION
PORT AUTHORITY — 17 PROJECTS / \$584.6 MILLION



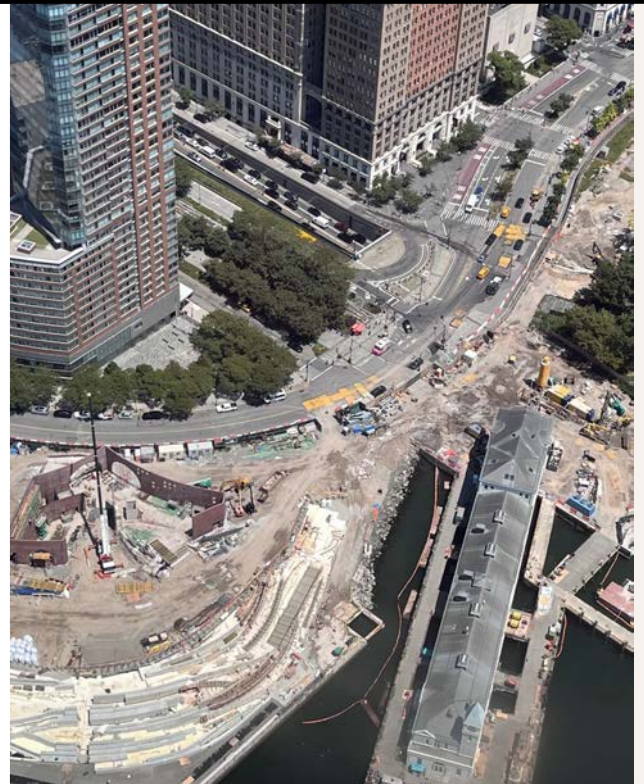
RESILIENCY: PROTECTING NEW YORK'S FUTURE



The Lower Manhattan Coastal Resiliency (LMCR) Project is a coastal protection initiative aimed at reducing flood risk in Lower Manhattan. The LMCR Project area spans the entire Lower Manhattan coast. The City, State, and the Federal governments have set in place over \$1.7 billion in capital investments for the integrated coastal protection projects.

South Battery Park City Resiliency Project

Battery Park Constructors LLC (BPC) is at work on interrelated resiliency projects as part of the LMCR to protect Battery Park City and the Lower Manhattan coast from the threats of storm surge. As part of this project, deployable flip-up gates, a cast-in-place concrete wall, and reinforced concrete walls raising the existing at-grade site elevation will be installed. BPC will also be constructing new tide gate chambers, one at Pier A Plaza and one at Rector Place, and re-routing existing utilities along Battery Place.





East Side Coastal Resiliency

Work being done on this portion of the LMRC by C.A.C. Industries consists of construction of a flood barrier spanning approximately 2.4 miles along the East River to improve flood protection. In addition, two pedestrian bridges

at Delancey Street and Corlears Hook require removal and full replacement over the FDR Drive. A third major aspect of this project is the full replacement of the storm and interceptor sewers running below ground level across the site.

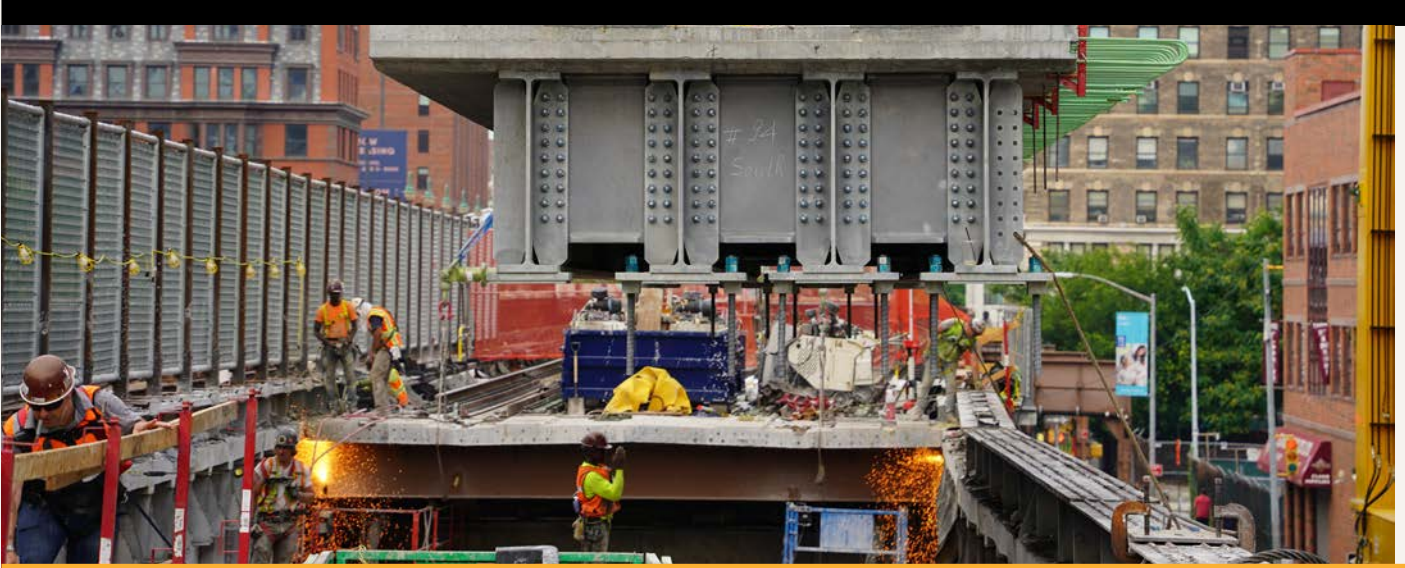


Brooklyn Bridge Resilience

GCANY member John P. Picone Inc. is working hard on this remarkable resiliency project that will protect thousands of residents in the Two Bridges neighborhood of Lower Manhattan. Significant progress has been made with the first flip-up gates successfully installed this past spring. The overall project includes 1,900 linear feet of floodwall,

89 flip-up gates, 6 roller gates, and 2 swing gates. These deployable barriers, reaching 16 ft. above sea level, will be permanent infrastructure, hidden until they are hydraulically activated in the event of a major storm. When not in the raised position, they will serve as an area for open space and recreation.

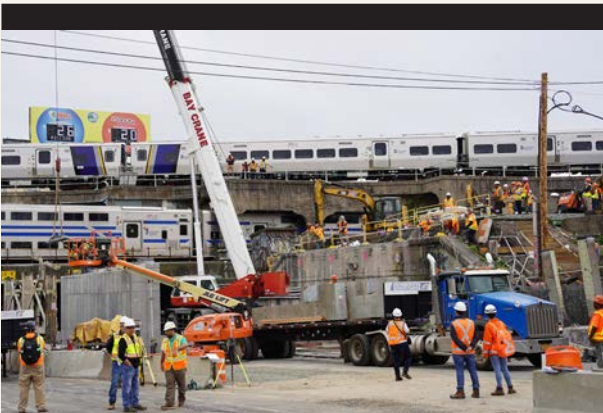
MOVING NEW YORK'S COMMUTERS: BY RAIL AND ROAD



Rails

New York's dense urban environment poses another set of challenges to road and rail work, with buildings mere feet from major operations. In this replacement of portions of the Park Avenue Viaduct, three 200-ton capacity Mi-Jack gantries, more than 60-ft. tall, span over the viaduct. This allows trains and vehicle traffic

to operate continually, even during construction. The gantries' wheelbases are more than 9-ft tall. Prefabricated Bridge Units (PBUs) are produced off-site and direct fixation track is constructed on-site during the weeks leading up to the outages, alleviating time and space needed around the construction area.



Rails

A joint venture of Halmar and Railworks is expanding Penn Station access, but making improvements to New York's commuter options definitely has its complexities. Imagine creating four new stations, four bridge rehabilitations, 100,000 feet of new track along with eight power substations—all without disturbing the morning rush. GCA contractors are doing just that.





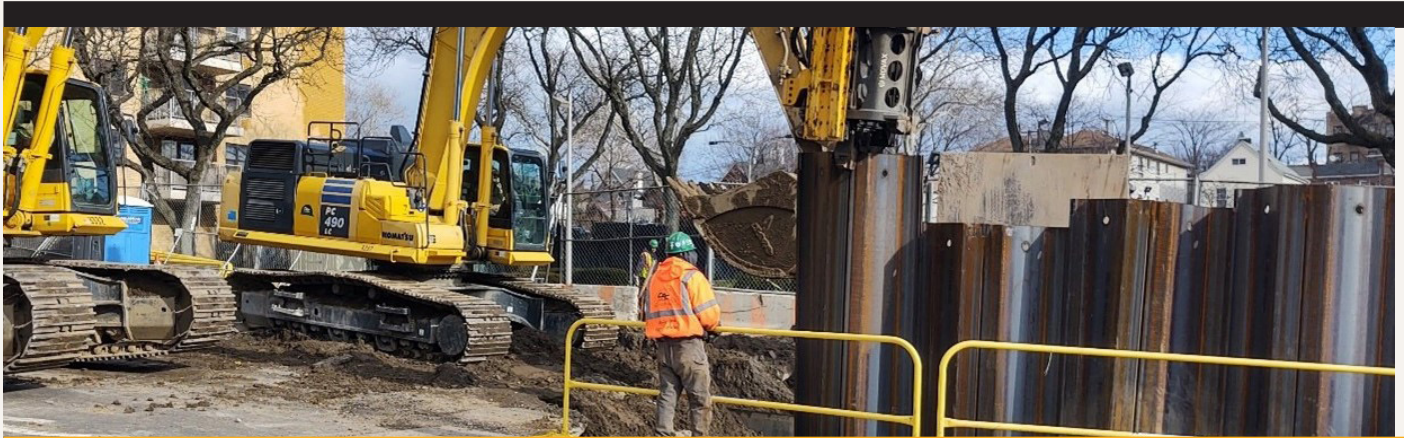
Roads

GCA contractors are hard at work on the Van Wyck Expressway Capacity and Access Improvements to JFK Airport. The project is moving more vehicles and people to the airport by building two bridges and

replacing or rehabilitating three LIRR bridges. Higher safety standards for vehicular traffic on the Van Wyck Expressway and quicker train service in and out of Jamaica station are the hallmarks of this project.



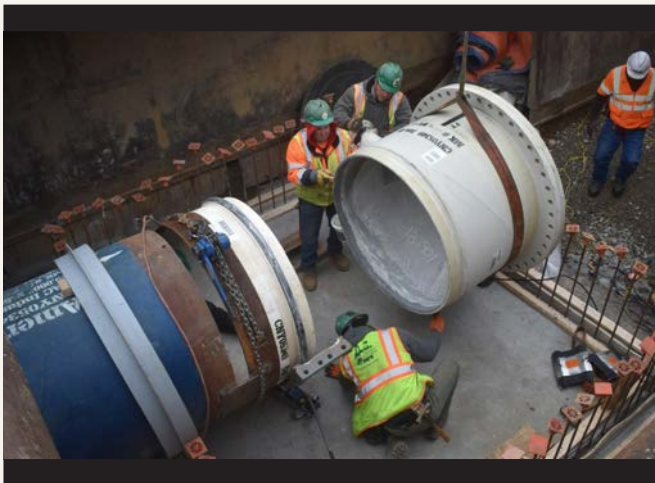
BELOW THE STREETS: GETTING IT DONE



GCA member contractors have worked below the streets of NYC for over one hundred years. A labyrinth of drinking water, sewage, and utility pipes across the city is constantly being repaired and replaced, and it's never routine work.

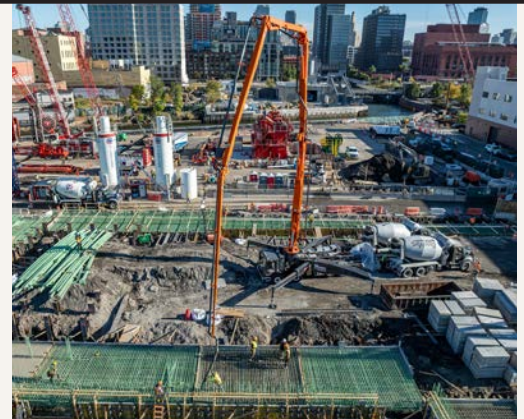
Along a stretch of the Cross Bronx Expressway, a unique project required digging deep shafts for jacking and

receiving a 48-inch casing sleeve. Many challenges were overcome by C.A.C. Industries crews to complete support of excavation (SOE) installation. The casing was successfully completed, and then a project transition into 36-inch gas transmission main installation though the casing began. Storm and combined sewers, catch basins, and steel faced concrete curbs were also replaced or rebuilt.

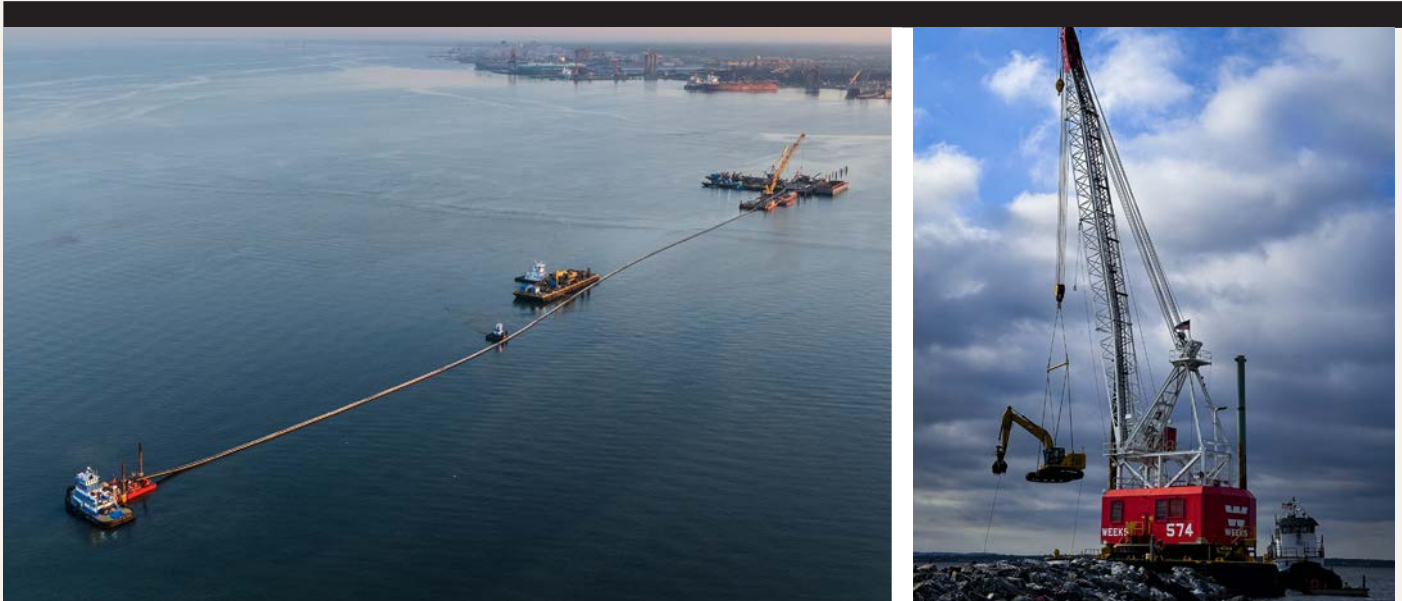


Only GCA contractors could conceive, plan, and execute the excavation and replacement of a 48-inch trunk and distribution water main. The project also includes sewer work, installation of street lighting, traffic signal upgrades, and road restoration. Spanning 2.53 miles, the Corridor runs through the Brownsville, East New York, and Cypress Hills neighborhoods of Brooklyn. Additionally, this C.A.C. Industries project served as a pilot for the structural rehabilitation of the 48-inch steel water main using a carbon fiber lining system.

Under the streets, along the pipeways, sewer overflow facilities work is being done by GCA contractor, John P. Picone. The scope of work at the Gowanus Canal Owls Head Facility encompasses all demolition, utility disconnect and regulated materials abatement of the project site, and construction of the new DSNY Sanitation Facility and Composting Facility. Included in this work is the installation of H-Piles, placement of concrete, and erection of a pre-engineered steel structure for the Salt Shed and precast concrete structures for the Composting Facility. Sewer and water services and electrical work around the perimeter of the project site are also being performed.



AROUND THE WATERWAYS



Sustainable Energy

Weeks Marine is transforming New York's energy future as a part of the South Brooklyn Marine Terminal (SBMT) project. SBMT will be New York's first purpose-built offshore wind operations center. When completed, the facility will be one of the largest dedicated offshore wind hubs in the United States, designed to accommodate future offshore wind projects.

The 73-acre construction project will create a staging and pre-assembly site for the turbine components and will include an onshore substation to connect 810 MW of wind power to the Gowanus substation, making Empire Wind 1 the first offshore wind project to connect directly into the New York City grid.

The Caldwell Marine International (CMI) team has made steady progress on the Champlain Hudson Power Express (CHPE) project. CMI has multiple marine phases of one of the largest infrastructure investments in the history of New York. The CHPE project capitalizes on CMI's expertise in cable laying and Huxted Trenchless' expertise in shore end drills. The project will transport hydroelectricity to New York City and will help power more than one million homes.



REBUILDING THE GEORGE WASHINGTON BRIDGE



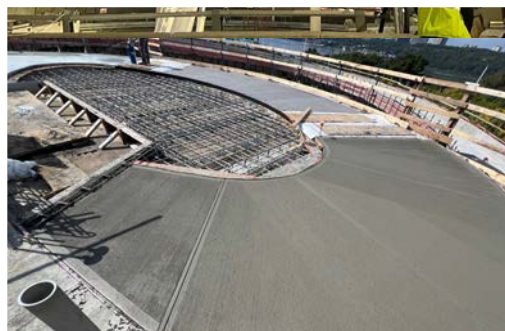
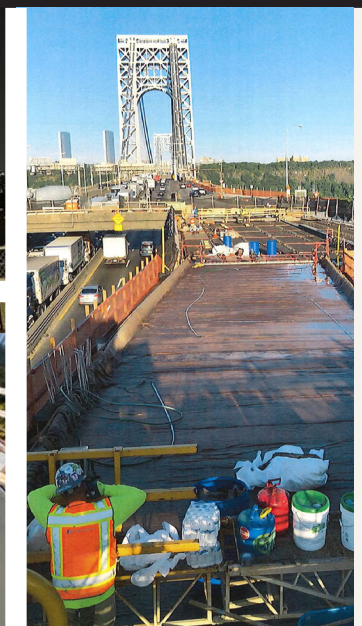
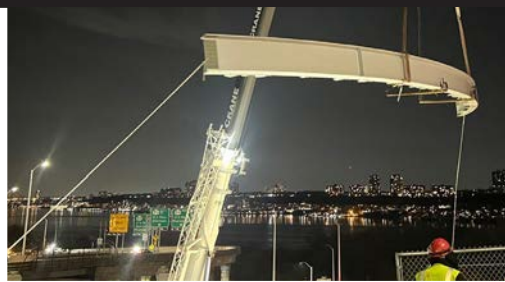
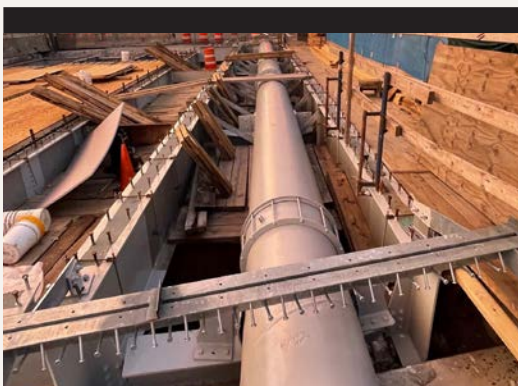
The George Washington Bridge is the world's busiest motor vehicle bridge, carrying traffic volume of over 100 million vehicles annually. The upper deck of New York City's "gateway to the west" was first built and opened in 1931, with the lower deck added in 1962. It is the world's only suspension bridge with 14 vehicular lanes.

The Port Authority is undertaking comprehensive rehabilitation of the GWB. El Sol Contracting, a GCA member contractor, is working on five unique projects to rebuild the bridge and facilities, which include: structural widening of the mainline New York approaches, constructing two new

pedestrian ramps, blasting and painting Lower-Level structural steel, replacing bridge travelers, repairing structural steel on both the Upper and Lower Levels, and rehabilitating Center Avenue and Lemoine Avenue bridges over the mainline in New Jersey.

The work comprises:

- Replacement of existing bridge decks, bearings, bridge railings, and amenities
- Removal of lead-based paint
- Repainting the underside of the Lower Level



MAKING THE CITY HEALTHIER



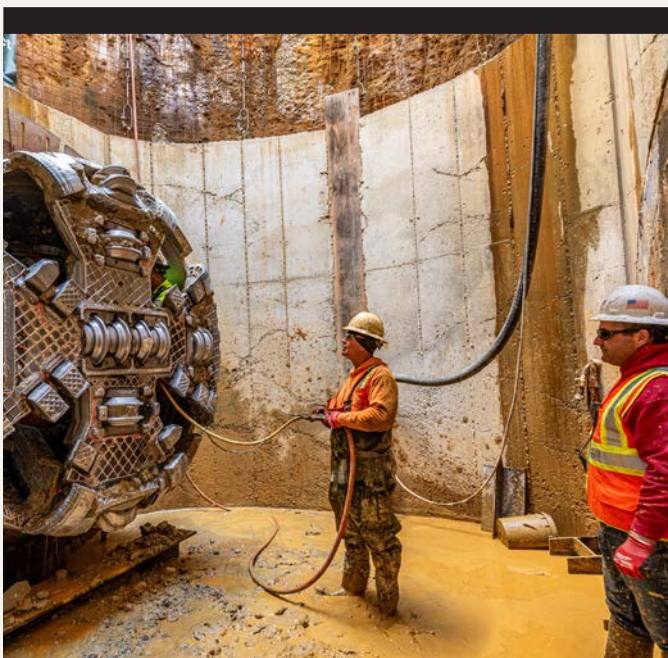
Gowanus Canal Combined Sewer Overflow Facilities

Gowanus Canal Constructors (GCC), a joint venture of Picone and Yonkers Contracting Company, Inc., is working on this transformative project for the NYC Department of Environmental Protection. Together the companies are building a cleaner and safer space for the surrounding community with additional waterfront esplanades, public space amenities, and ecosystem restoration.

Located adjacent to the Gowanus Canal Pump Station, the facility will protect the historic Canal and the neighboring

communities from uncontrolled storm event overflow, helping to reinstate and preserve the natural environment. Construction involves demolition of existing at-grade slabs, support of excavation (SOE), excavation and construction of all below-grade structures for the CSO tank, and conveyance structures.

This important project complements the U.S. EPA's ongoing Superfund dredging project and will significantly improve the health of the neighborhood.



Hannah Street Pump Station Upgrade

Located on Front Street in northeast Staten Island, the Hannah Street Pump Station Project is advancing as crews build the interim pumping station area, excavating approximately 40 ft. deep including four levels of internal steel bracing.

Hannah Street Pumping Station is the largest DEP Pump Station in Staten Island, originally constructed and commissioned in 1977 and now being reimagined by John Picone. With numerous deficiencies, the facility is in need of a comprehensive upgrade. The overall project includes constructing a new electrical building and Con Edison metering building, and rehabilitating an existing force main sewer.

GCA CONTRACTORS: OUR COLLEGIALITY AND NETWORKING MAKES THE GCA A BETTER ASSOCIATION



GCA Golf Outing

Westchester Country Club

An absolutely perfect day, sunny skies and warm weather, greeted a record number of 370 golfers and 700 dinner guests for golf and networking at the Westchester Country Club in Rye New York.





Annual Members Dinner

Cipriani

Each year our members gather in black tie to celebrate another year of building New York. This is a tradition that dates back to the founding of the GCA with its very first organizational meeting in December 1908.



STRONGER TOGETHER

LABOR RELATIONS

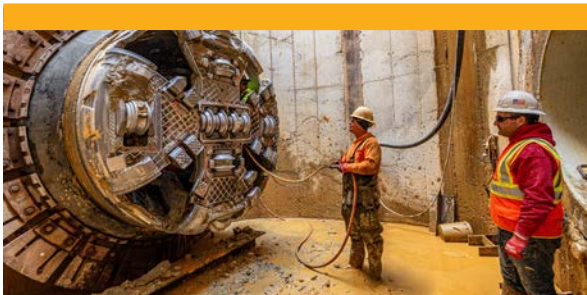


While the GCA negotiates collective bargaining agreements for our members with its signatory unions, our organization also devotes resources to creating a collegial environment and fostering a good working relationship.

Management and Labor have several annual meetings and conferences that are held jointly.

We work hand-in-glove with our labor partners on safety and welfare for the heavy civil workforce by serving as trustees on various retirement funds.

We also “build” the human fabric of New York City by supporting student scholarships and numerous charities together.



GCA CONTRACTORS HOURS ROSE 10.3% IN 2024, OVER THE PRIOR YEAR. THIS FOLLOWS A 9.4% INCREASE IN 2023.



Special Olympics NY Annual Labor Dinner honorees, David Carabaloso (Vice President NYC District Council of Carpenters) and Robert Wessels (GCA Executive Director)



Labor Management Conference at the Carpenters National Facility

GOVERNMENT AFFAIRS



The GCA is constantly advocating for, and advancing, a sensible public policy program on behalf of its member contractors. Construction in New York is challenging enough on its own, but a maze of regulations and bureaucracy can only add to the difficulty.

Whether in City Hall, Albany, or Washington D.C., we are encouraging regulatory streamlining, always striving to protect the industry from costly and time-consuming laws and regulations. The GCA is considered an excellent

informational and policy resource by our elected officials, commissioners, public agencies, and authorities.

GCA member contractors have had their voices heard directly by U.S. senators and congressmembers, the Governor of New York, and the Mayor and Comptroller of New York City. But we don't stop there: through our Law & Legislation Committee and Working Groups, we bring the decision makers right into our conference room to work with GCA contractors on solutions that benefit all parties.



SAFETY



GCANY contractors make every effort, every day, to ensure that workers and work sites are ... SAFE. Together, we all work to promote safety measures during Safety Week, Construction Suicide Prevention Month, and OSHA's National Safety Stand-Down To Prevent Falls in Construction.

Whether it's safety training, personal protection equipment or toolbox talks, contractors take great pride in knowing that they are protecting and improving the lives of people working in this great industry.

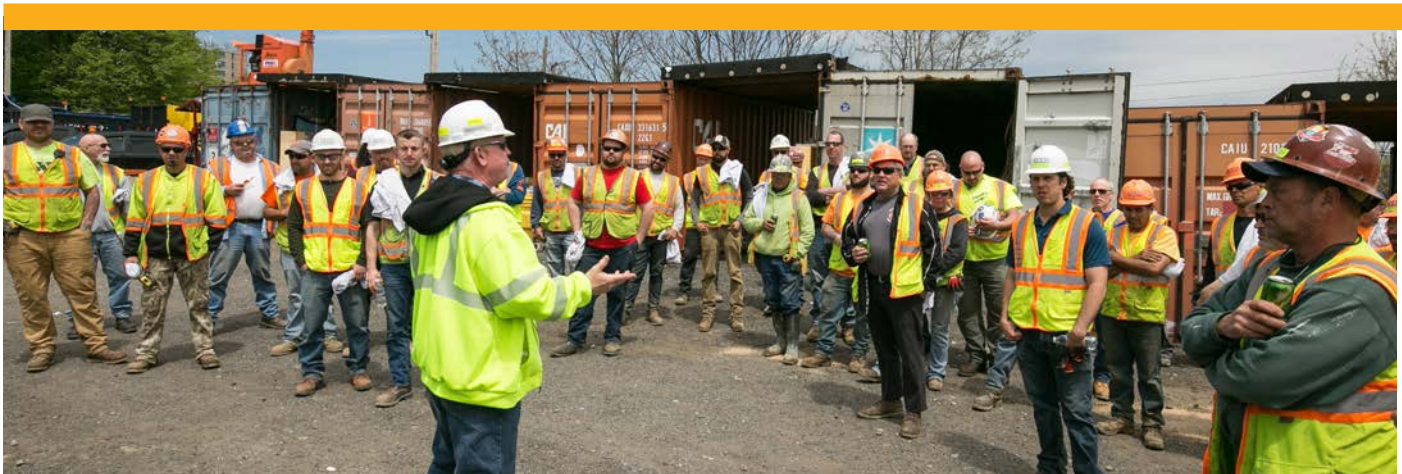




“Mental Health Matters” was this year’s focus. Recent studies showed that suicide has surged 40 percent in the U.S. over less than two decades, with blue-collar workers, particularly in construction, at a significantly higher risk. The total suicide rate among all men was 27 individuals per 100,000 people, but the rate among those in the construction field was 49 per 100,000.

The advent of the 988 Suicide Prevention Hotline and events like this year’s Safety Week are raising awareness among workers that there is someone there to listen and to help. The GCA Safety Committee meets monthly to advance best practices and discuss the latest efforts in safety. If you haven’t yet joined a meeting, become a part of the conversation.

24/7 free and confidential support
CALL OR TEXT: 988
CHAT: 988LIFELINE.ORG



MOVING OPPORTUNITY FORWARD



This year marked the GCA's 15th annual Opportunity Expo networking event for contractor members, Federal, State and City agencies, and emerging MWBE companies.

The exchanges provide insight on working with GCA contractors, understanding the relationship of prime contractors and subcontractors, and building the professional relationships that lead to procuring work.



It was a packed house with more than 600 MWBEs registered to attend, along with 45 GCA contractor members and 10 New York State and City agencies and authorities.

The Opportunity Expo helps contractors share new insights into the needs and the requirements of the heavy civil construction

The program featured key speakers that help shape the regulations for New York State and City, including:

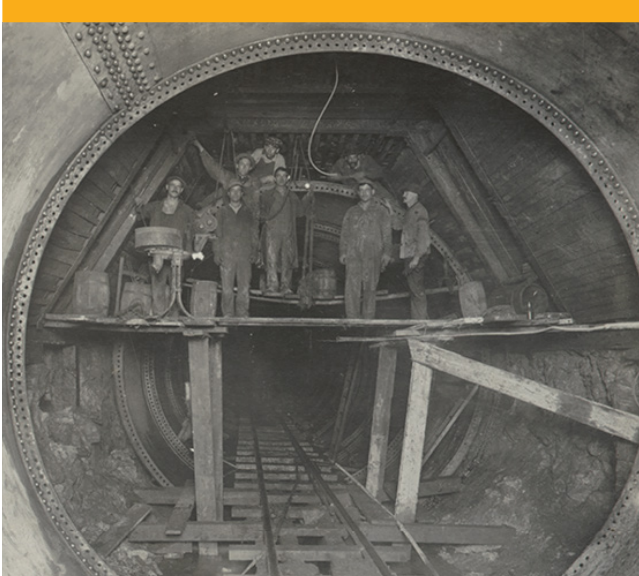
- Michael Garner, *Chief Business Diversity Officer, City of New York*
- Thomas Foley, *Commissioner NYC DDC*
- Jason Clark, *Executive Vice President, Empire State Development*
- Lourdes Zapata, *Chief Diversity Officer, MTA*
- Derick Hallahan, *Assistant Vice President Major Projects, Amtrak*
- Robert Hickman, *Chief Administrative Officer, Gateway Development Commission*

TRANSFORMING NEW YORK ... FOR 115 YEARS

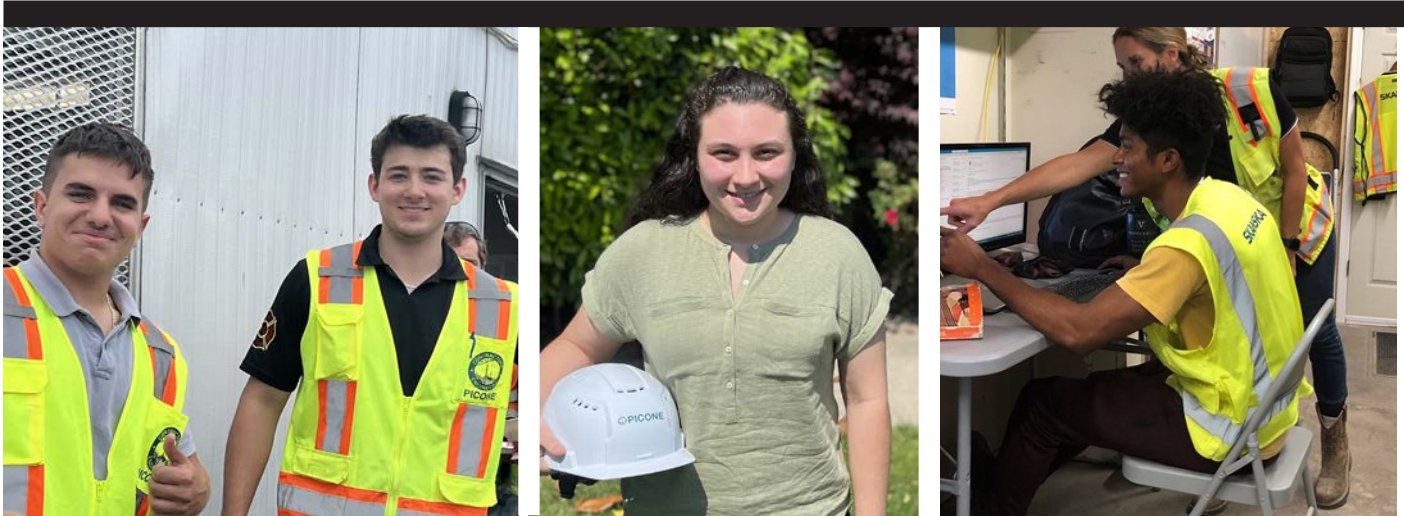
In 1909, a group of construction companies banded together to help government and private industry in New York City build the world's most modern metropolis. Within ten years, they built Water Tunnel #1, the Hells Gate Bridge, a number of subway tunnels, and Grand Central Terminal.

It was the vision of this group—the founders of the GCA—to build the world's leading water, roadway, transportation, and foundation civil infrastructure in New York City.

Today, GCA members carry that vision **forward**. We build the city's subway system and the roads and bridges that connect the five boroughs of New York together and to the rest of the region. We are modernizing the clean water tunnels and treatment plants. We continue to lay the foundations for the City's skyline. Our work doesn't stop; we will continue to build bold new projects into the next century and beyond.



LAUNCHING THE NEXT GENERATION



The John F. Donohoe Scholarship Fund, created by the GCA to honor its former president, has provided internships with GCA member companies to hundreds of students pursuing civil engineering careers. Since the Scholarship's inception, we eclipsed \$1 Million in awards. Overall, there have been 286 scholarships issued. In 2024, there are 32 awards disbursed totaling \$112,000.

Through a summer internship with a GCA member company, John Donohoe Scholarship students receive firsthand experience, professional opportunities, and personal growth. The students gain relevant skills both in the office and in the field, with hands-on training in site

safety management, cost estimating, project scheduling, and other activities related to heavy civil construction.

GCA members are also involved with the Tri-State Engineering Expo. The Expo provides an opportunity for local high school and middle school students to meet and talk with engineering and construction professionals about the amazing world of heavy civil construction work.



GENERAL CONTRACTORS ASSOCIATION

Membership List

The GCA is:

Contractor Members

Agate Construction Company, Inc
Akela Contracting LLC
American Pile and Foundation LLC
Anchormen Construction LLC
Atlantic Reinforcing Concrete Co.
Bancker Construction Corp.
Beaver Concrete Construction Co., Inc.
Becho Inc.
BOND Civil & Utility Construction, Inc.
Bove Industries, Inc.
C.A.C. Industries Inc.
CCA Civil, Inc.
Citnalta Construction Corp.
Citywide Paving Inc.
Civetta/Cousins JV, LLC
Coastal Environmental Group, Inc.
Coppola Paving & Landscaping Corp.
CRS Contractors Inc.
Danella Construction of NY, Inc.
DeBoe Construction Corp.
DeFoe Corp.
Delta Railroad Construction, Inc. (DBA
Delta Railroad Services)
DGI – Menard, Inc.
DiFazio Industries LLC
Dragados USA, Inc.
Dryden Diving Co. Inc.
D-Star Waterproofers, Inc.
E.E. Cruz & Co., Inc.
Eastern Excavation
Eberhart Construction Co., Inc.
Ecco III Enterprises, Inc.
El Sol Contracting and Constr. Corp.
Falco Construction Corp.
Ferreira Construction Co. Inc.
Fratco Construction Corp.
**Frontier Kemper Constructors Inc.,
New York Region**
Gateway Demo/Civil Corp.
Gateway Industries, Inc.
Gianfia Corp.
Grace Industries LLC
Gramercy Group, Inc./GGI Inc.
H&L Contracting LLC
Halmar International LLC.
HHJR Construction LTD. d/b/a Accurate
Enterprises
HUICATAO Corp.
Integrated Structures Corp.
Island Foundations Corp.
J. D'Annunzio & Sons Inc.
J. F. Shea Construction, Inc.
J. Pizzirusso Landscaping Corp
J.T. Cleary Inc.
Jett Industries, Inc.
JLJ IV Enterprises Inc.
John Civetta & Sons, Inc.
John P. Picone Inc.
JR CRUZ Corp.
J-Track, LLC
Judlau Contracting, Inc.

Kelco Construction Inc.
Keller Industrial, Inc.
Keller North America, Inc.
Kiewit Foundations Co.
Kiewit Infrastructure Co.
KNR Management Inc.
LAWS Construction Corp.
Linde-Griffith Construction
Macro Enterprises Ltd.
Maspeth Supply Co., LLC
Matt-Con Services Corp.
Mayrich Construction
Michels Construction, Inc.
MVN Associates Inc.
New York Geomatics Inc.
Nicholson Construction Co.
Northeast Remsco Construction, Inc.
Oliviero Construction Corp.
Paul J. Scariano, Inc.
Perfetto Contracting Co. Inc.
Perfetto Enterprises Company, Inc.
Petracca & Sons, Inc.
Posillico Civil, Inc.
Prestige Stone & Pavers Corp.
Prima Paving Corp.
Railroad Construction Company, Inc.
RailWorks Transit LLC
Rebar Steel Corp.
Reicon Group, LLC
Restani Construction Corp.
Restani-ASW JV LLC
RMSK Contracting Corp.
Roger & Sons Concrete Inc.
Ruttura & Sons Construction Co., Inc.
Schiavone Construction Co. LLC
Silverite Construction Co., Inc.
Skanska Koch, Inc.
Skanska Mechanical and Structural Inc.
Skanska USA Civil Northeast Inc.
T. Moriarty & Son, Inc.
The Lane Construction Corporation
The Urban Group, Ltd.
Transit Construction Corp.
Trevcon Construction Company, LLC
Tri-State Civil Construction, LLC
Tri-State Groundwater Services, LLC DBA
Brighton Construction Group
Tully Construction Co. Inc.
Tutor Perini Corporation
Underpinning & Foundation Skanska, Inc.
Unicorn Construction Enterprises, Inc.
Union Paving & Construction Co., Inc.
Urban Foundation/Engineering, LLC
VMR Civil LLC
Walker Diving Underwater Construction LLC
Walsh Construction Company II, LLC
WDF, Inc.
Weeks Marine Inc.
Welkin Mechanical LLC
**William A. Gross Construction
Associates, Inc.**
Yonkers Contracting Co., Inc.

Associate Members

Advance Testing Company, Inc.
AI Engineers, Inc., PC.
Airweld Inc.
Alliant Insurance Services, Inc.
Amaracon Testing & Inspections, LLC
American Global LLC
Amoruso Equipment Rental Co.
Anchin, Block & Anchin
Anderson Kill PC.
Armstrong Teasdale
Associated Construction Contractors of NJ
Awisco New York Corp.
Bay Crane Service, Inc.
Brightcon, LLC
C & H Agency, Inc.
Call-A-Head Corp.
Campbell Foundry Company
Cap Equipment Leasing Corp.
Capital Project Management, Inc.
CFS Steel Company
Chubb Group of Insurance Companies
City Underwriting Agency, Inc.
Clarity Testing Services, Inc.
Clean Earth, Inc.
Cohen Seglias Pallas
Greenhall & Furman PC
CohnReznick LLP
Compass Adjusters & Investigators
Construction Information Systems
Construction Risk Partners LLC
Cullen and Dykman LLP
Dewberry Engineers Inc
Doka USA, Ltd.
Duane Morris LLP
Durante Rentals
E-J Electric Installation Co.
ESSCO Truck & Equipment
Fabiani Cohen & Hall, LLP
Feldman Lumber - L&W Supply
Forchelli Deegan Terrana LLP
Gabielli Truck Sales
GEI Consultants, Inc., PC.
Goetz Fitzpatrick, LLP
Grae & Grae, LLC
Grassi & Co., CPAs P.C.
H. O. Penn Machinery Company, Inc.
Hays Construction – Civil
Hellman Electric LLC
Heron Wolf Staffing LLC
Hinckley Allen
Hirani Engineering and Land Surveying, P.C.
HNTB Corporation
Hoffman International, Inc.
Hughes Bros., Inc.
Icon Equipment Distributors Inc.
Infinite Consulting Corp.
Ivy Rock Insurance Services, Inc.
Jesco, Inc.
Kaufman Dolowich & Voluck, LLP
KND Licensed Electrical
Contracting & Services, Corp.

Komatsu America Corp.
Liberty Mutual Surety
Lifting Gear Hire
Lockton Companies, LLC
Marcum LLP
Marsh USA, Inc.
Men of Steel Rebar
Milwaukee Power Tool
Modern Concrete Pumping Services, LLC
MSPC Certified Public Accountants and
Advisors, PC.
Mueser Rutledge Consulting Engineers
National Insurance Brokerage of NY, Inc.
Nautilus Consulting, LLC
New York Truck Escorts & Permits Inc.
NFP Property & Casualty Services, Inc.
Our Rental Pumps LLC
Parsons
Patrick DiCerbo / Northwestern Mutual
Peckar & Abramson, PC.
Pro Safety Services, LLC
Raw Equipment Corp.
RCA Asphalt, LLC
Reichman Frankle Inc
Sax LLP
Schnabel Engineering of New York
Sheppard, Mullin, Richter & Hampton
Siefert Associates LLC
Sims Metal
Site Safety, LLC
Smyrna Ready Mix Concrete, LLC.
Soil Connect Services, Inc.
STS Steel, Inc.
STV Inc.
Sunbelt Rentals
T & H Brokers Inc.
Taylor Oil Co. Inc.
Thalle Industries, Inc.
The Fort Miller Co., Inc.
The Graham Company
Tilcon New York, Inc.
Travelers
Troutman Pepper Hamilton Sanders LLP
United Rentals North America, Inc.
United Site Services, Inc.
Urban Engineers of New York, D.P.C.
UrbanTech Consulting Engineering, PC
USI Insurance Services LLC
VHB Engineering
Warsaw Burstein LLP
Welby, Brady & Greenblatt, LLP
Welsbach Electric Corporation
Wiss & Co. LLP
WithumSmith + Brown, PC
WSP USA
Zurich Insurance
*** denotes Executive Committee**



GCA General Contractors Association of New York, Inc.
We Build New York

60 East 42nd Street, Suite 3510
New York, NY 10165-3598
gcany.com